



**TO:** William Voelker, Town Planner – Town of Cheshire  
**FROM:** Ryan McEvoy, Principal Civil Engineer – Milone & MacBroom, Inc.  
**RE:** Orchard View Subdivision – Sight Line Distances  
 Academy Road (Route 68 and 70) and Wiese Road  
 Cheshire, Connecticut  
**DATE:** December 10, 2020  
**MMI #:** 4997-14-8

RECEIVED  
 Town of Cheshire  
 DEC 11 2020  
 Planning Dept.

In support of the current subdivision application for Degennaro Development and Construction at Academy Road (Route 68 and 70) and Wiese Road, Milone & MacBroom, Inc. (MMI) has evaluated the proposed site plan with respect to the sight lines at the proposed roadway intersections to Academy Road and Wiese Road. The posted speed limit along Wiese Road is 25 miles per hour (MPH) and the posted speed limit along Academy Road (Route 68 and 70) is 40 MPH. The Intersection Sight Distance (ISD) guidance from the *Connecticut Department of Transportation Highway Design Manual 2003 Edition* (Figure 11-2C) for 25 MPH design speeds (passenger car) is 280 feet; for 40 MPH design speeds (passenger car) it is 445 feet.

ISDs for the proposed roadway intersections at Wiese Road and Academy Road were measured with the height of the driver at 3.5 feet above the proposed roadway grade to replicate the height of a driver for a passenger car. The measured ISDs for the proposed intersection at Wiese Road looking left and right were both 555 feet. According to Figure 11-2C of the *Connecticut Department of Transportation Highway Design Manual 2003 Edition*, an ISD of 555 feet correlates to a design speed of 50 MPH (passenger car). The looking right ISD for this intersection could be enhanced by the removal of a portion of the grass/brush vegetation along the western side of Wiese Road. The looking left ISD could be increased by pruning several limbs on a couple of trees located to the north of the proposed intersection on the western side of Wiese Road.

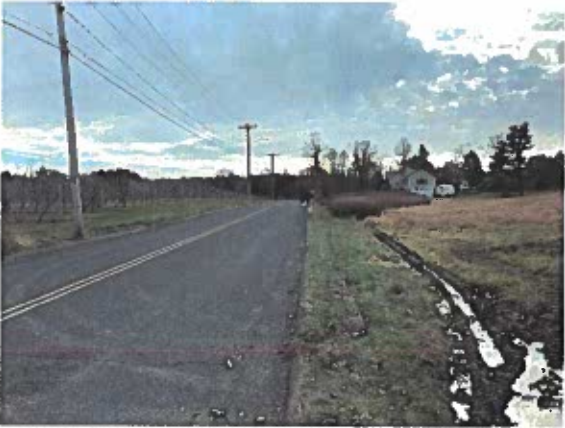
The measured ISDs for the proposed intersection at Academy Road looking left was 845 feet and looking right was 1,160 feet. According to Figure 11-2C of the *Connecticut Department of Transportation Highway Design Manual 2003 Edition*, an ISD of 775 feet or greater correlates to a design speed of 70 MPH for a passenger car. Sight line easements for the proposed intersections are proposed across Lots 1, 8, 9, and 21 to ensure the ISDs measured are maintained once the subdivision has been completed and allow for any vegetation to be removed if needed to maintain the ISD. Attached are *Figure 1 Sight Line Photos – Wiese Road* and *Figure 2 Sight Line Photos – Academy Road*, which provide pictures taken from the locations of the proposed intersections.

Attachments

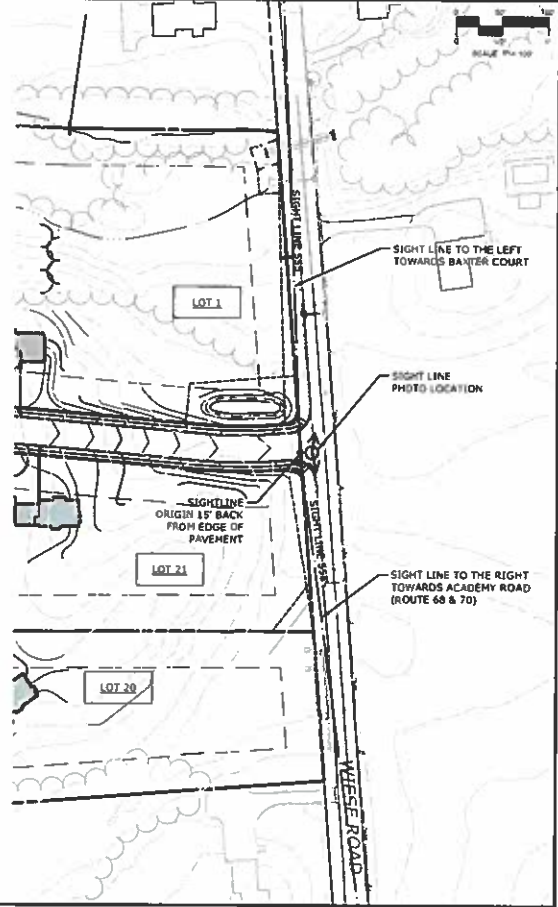
4997.14.d1020.ltr.docx





**PHOTO LOOKING LEFT TOWARDS BAXTER COURT**



**PHOTO LOOKING RIGHT TOWARDS ACADEMY ROAD (ROUTE 68 & 70)**







REVISIONS		
NO.	DATE	DESCRIPTION

**SIGHT LINE PHOTOS - WIESE ROAD**  
 ORCHARD VIEW SUBDIVISION  
 RESIDENTIAL SUBDIVISION  
 ACADEMY ROAD PORTS AND TRAILERS ROAD  
 ORCHARD, CONNECTICUT

ACD	ACD	LSM

DECEMBER 7, 2020  
 4897-14

FIG. 1

